



Printing consultant, InkTec

My, InkTec Co., Ltd, jako jeden z vedoucích výrobců v Korei, dodáváme různé druhy produktů určených pro inkoustový tisk do přibližně osmdesáti zemí za posledních dvacet tři let. Od roku 1992 jsme známí jako společnost, která je orientována na výzkum a vývoj v oblasti inkoustového tisku. Na rozdíl od jiných dodavatelů inkoustu, kteří zadávají výrobu externím firmám, my navrhujeme a vyrábíme různé druhy inkoustů a souvisejících produktů pomocí naší vlastní technologie. Za účelem plného uspokojení potřeb našich zákazníků se vždy snažíme dodávat „Komplexní řešení inkoustového tisku“ jako například speciální média pro inkoustový tisk, systémy kontinuálního plnění a nebo třeba náhradní díly. Navíc, všichni naši zaměstnanci se trvale věnují vývoji rozmanitých produktů v rámci naší vize „World-class vedoucí společností v oblasti inkoustových aplikací a tištěné elektroniky.

In order to meet customer's satisfaction, we always try to supply 'Total solution in Inkjet printing' such as Inkjet specialty media, a bulk ink system and printer parts. In addition, all of the InkTec staff have continuously devoted to developing diverse products with InkTec vision, "A World-class Leading Company in Inkjet Applications & Printed Electronics." So, we can always provide high quality products and customized services to our valuable customers. Our integrated technology and stringent quality control ensure that the quality of InkTec products exceeds that of any counterparts on the market.

The standard of Sublimation Ink, InkTec's SubliNova

'SubliNova' is the brand name of InkTec's dye sublimation ink.

This name is derived from the words 'Sublimation and 'Innovation'.

Nova means 'new star', which reflects our desire to become a new star-player in the worldwide sublimation market.

SubliNova is easily recognisable as a sublimation ink whilst also highlighting the innovation that went into producing it.

The blue logo is the corporate color of InkTec and using this keeps up our brand identity.

The magenta symbolizes the modern futuristic nature of the SubliNova ink.





About SubliNova	2
SubliNova G7	6
SubliNova HI-LITE	8
SubliNova Sure	10
SubliNova Rapid	12
SubliNova Smart	14
Media	16



High performance digital sublimation ink

SubliNova offers vibrant colors when used for transfer printing of polyester textiles with excellent jetting performance.

Excellent fastness properties

SubliNova shows excellent properties when used for printing polyester and poly-blend fabrics, with excellent wash and light fastness, resistance to acid & alkali perspiration and dry & wet crock fastness.

Eco Friendly

SubliNova series are environmentally friendly products using only high-class dyes and its excellent quality has been proved by an international testing agency.

All SubliNova series are free from formaldehyde, VOCs, Alkylphenol and compliance with RoHS.



TEST RESULTS FOR ROHS FREE ROHS

All test results are 'Not detected', as authorised by SGS(<http://www.sgsgroup.kr/en>).

Color \ Contents	Cadmium(Cd)	Lead(Pb)	Mercury(Hg)	Hexavalent Chromium(Cr VI)
● Black	N.D.	N.D.	N.D.	N.D.
● Cyan	N.D.	N.D.	N.D.	N.D.
● Magenta	N.D.	N.D.	N.D.	N.D.
● Yellow	N.D.	N.D.	N.D.	N.D.

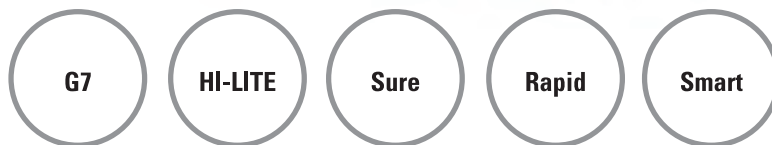


TEST RESULTS FOR FORMALDEHYDE & VOCs(VOLATILE ORGANIC COMPOUNDS) FREE FORMALDEHYDE & VOCs

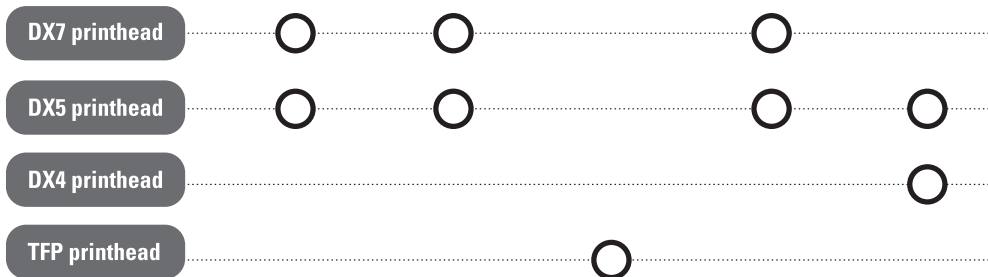
Formaldehyde and VOCs can cause serious health problems.

All test results are 'Not detected', as authorised by SGS(<http://www.sgsgroup.kr/en>).

Color \ Contents	Formaldehyde	VOCs
● Black	N.D.	N.D.
● Cyan	N.D.	N.D.
● Magenta	N.D.	N.D.
● Yellow	N.D.	N.D.



G7 Specially designed for DX7 printhead
HI-LITE High color concentration
Sure Specially designed for TFP printhead
Rapid Extreme Versatility
Smart Suitable for transfer and direct printing



PROVIDE ICC PROFILE

Our technicians will help you develop an ICC profile and provide you with the relevant color profile for SubliNova inks.
 The result : a perfect match, or even provide a full color management training.



FIELD SERVICE

On-site technician performs preventative maintenance or repair service on printers currently installed with SubliNova inks.
 Our technicians will evaluate printer's condition and then identify and perform required service.

APPLICATION

Polyester and polyamide fabrics, spandex, lycra, nylon used in sports apparel and outdoor clothing
 Plastic substrates like skis, snowboards, skateboards and surfboards
 Mixed synthetic fabrics(used in sports apparel and outdoor clothing) with a minimum polyester content of 60%



Interior display



Fancy items



Flag



Sports wear, Swim suit



Exhibition

G7

SubliNova G7

SubliNova G7 mainly targets for printers equipped with Epson DX7 printhead. The key feature of SubliNova G7 is the outstanding printability. It can be printed efficiently for longer hours in high-speed print mode to reduce production costs.

Primary Features

- Suitable for the plotters equipped with Epson DX5, DX7 printhead
- Superior print quality and stability at high speed mode
- Outstanding printability for longer hours
- Suitable for use with various transfer paper
- Environmentally friendly : Free from formaldehyde, VOCs, Alkylphenol and compliance with RoHS

PRINTER COMPATIBILITY

MUTOHVJ1624/ 1638
MIMAKITS34-1800, JV33-130/ 160
ROLAND XF640, RE640, FH740

SHELF LIFE

12 MONTHS

PRODUCT OFFERING

PACKING:

1L PACK, 1L BOTTLE, 20L BOTTLE

COLORS:

BLACK CYAN MAGENTA YELLOW LIGHT CYAN LIGHT MAGENTA

HIGH DENSITY
BLACK



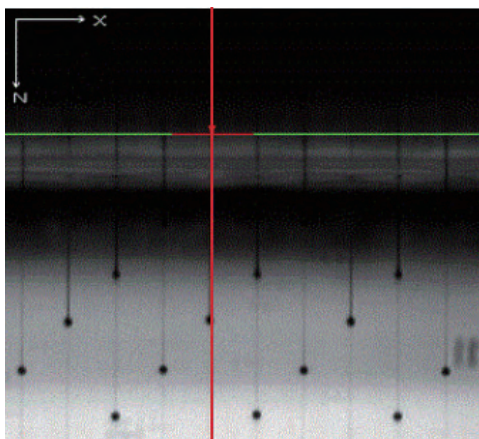


TABLE OF FASTNESS PROPERTIES

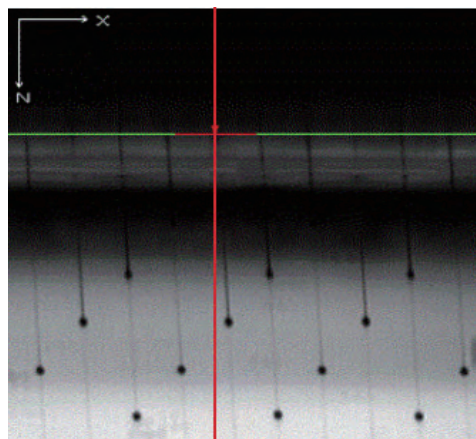
Color	Content	Transfer Condition		Light Fastness	Wash Fastness	Alkali Perspiration Fastness	Crock Fastness
		180°C/ 60sec	200°C/ 30sec	ISO 105-B02(160h) Rating 1-7	ISO 105-C06:2007(40°C) Rating 1-5	ISO 105-E04:2010 Rating 1-5	ISO 105-X 12:2001 Rating 1-5
●	HD Black	180°C/ 60sec	200°C/ 30sec	4/5	4/5	4/5	4/5
●	Cyan	180°C/ 60sec	200°C/ 30sec	4/5	4/5	4/5	4/5
●	Magenta	180°C/ 60sec	200°C/ 30sec	7	4/5	4/5	4/5
●	Yellow	180°C/ 60sec	200°C/ 30sec	7	4/5	4/5	4/5

OUTSTANDING PRINTABILITY

Even running at high speeds for long periods of time the ink is guaranteed not to deflect and maintains its jetting straightness. This means less down-time for routine maintenance resulting in greater profitability and productivity.



SUBLINOVA G7



OTHERS INKS

HI-LITE

SubliNova HI-LITE

SubliNova HI-LITE is based on a high black and color density ink formula to be efficient with low production costs and is able to be printed onto any uncoated and coated light-weight transfer papers(50~70gsm) with fast drying time. Moreover, it maintains the quality under the high speed option(360x720dpi/ 2pass/ 50m²/h).

Primary Features

- Suitable for the plotters equipped with Epson DX5, DX7 printhead
- High color concentration with vivid color
- Suitable for use with uncoated and coated light-weight transfer paper(50-70gsm)
- Efficient, with low production costs
- Superior print quality and stability at high speed mode
- Environmentally friendly : Free from formaldehyde, VOCs, Alkylphenol and compliance with RoHS

PRINTER COMPATIBILITY

MUTOHVJ1604/ 1618/ 1638, RJ900C
MIMAKI JV5-130/ 160, JV33-130/ 160
ROLAND FH740

SHELF LIFE

12 MONTHS

PRODUCT OFFERING

PACKING:

1L PACK, 1L BOTTLE, 20L BOTTLE

COLORS:

ULTRA HIGH DENSITY BLACK CYAN MAGENTA YELLOW



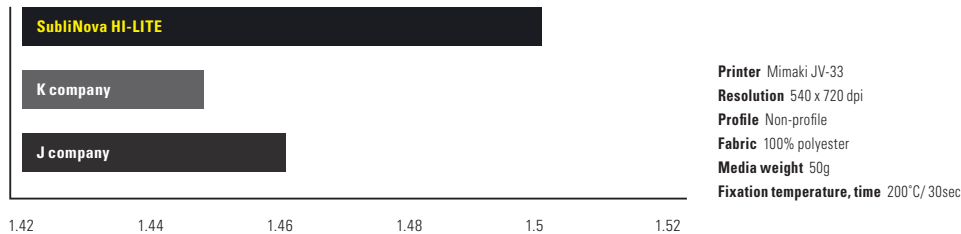


TABLE OF FASTNESS PROPERTIES

Color \ Content	Transfer Condition		Light Fastness	Wash Fastness	Alkali Perspiration Fastness	Crock Fastness
	180°C/ 60sec	200°C/ 30sec	ISO 105-B02:1994(160h) Rating 1-7	ISO 105-C06:2010(40°C) Rating 1-5	ISO 105-E04:2013 Rating 1-5	ISO 105-X 12:2001 Rating 1-5
● UHD Black	180°C/ 60sec	200°C/ 30sec	4/5	4/5	4/5	4/5
● Cyan	180°C/ 60sec	200°C/ 30sec	4/5	4/5	4/5	4/5
● Magenta	180°C/ 60sec	200°C/ 30sec	6	4/5	4/5	4/5
● Yellow	180°C/ 60sec	200°C/ 30sec	7	4/5	4/5	4/5

BLACK OPTICAL DENSITY

SubliNova HI-LITE has a special black, called “UHD black” which means Ultra High Density black and its optical density is higher than black inks from competitors. The higher the figures, the deeper the optical density.



EFFICIENT, WITH LOW PRODUCTION COSTS

SubliNova HI-LITE is based on high black and color density ink formula to be efficient with low production costs, saving up to 23% compare to other inks. The data of ink consumption below is tested on Mimaki JV-33 with 540 x 720dpi, Bi, 4Pass option, printing up to 10 sqm for each color.

Color \ Content	SubliNova HI-LITE	Other inks	Rate of ink saving
● UHD Black	0.123 ℓ	0.167 ℓ	26%
● Cyan	0.135 ℓ	0.172 ℓ	22%
● Magenta	0.114 ℓ	0.142 ℓ	20%
● Yellow	0.144 ℓ	0.184 ℓ	22%

Printer Mimaki JV-33
Resolution 540 x 720dpi, Bi, 4Pass
Profile Non-profile
Media weight 50g

Sure

SubliNova Sure

SubliNova Sure is based on a high black and color density ink formula to be efficient with low production costs. SubliNova Sure shows optimal printing stability and long lasting head performance and is formulated to be compatible with Epson TFP head.

Moreover, it maintains the quality under the high speed option(360X720dpi, 1pass, 58.9m²/h) of Epson SC-F7000.

Primary Features

- Suitable for the plotters equipped with Epson TFP printhead
- Wider color gamut than original inks
- High color concentration with vivid color
- Superior print quality and stability at high speed mode
- Environmentally friendly :
Free from formaldehyde, VOCs, Alkylphenol
and compliance with RoHS

PRINTER COMPATIBILITY

EPSON SURECOLOR F6000/ F7000
EPSON SURECOLOR T7000
EPSON STYLUS PRO 9700

SHELF LIFE

12 MONTHS

PRODUCT OFFERING

PACKING:
1L BOTTLE, 20L BOTTLE

COLORS:


HIGH DENSITY BLACK CYAN MAGENTA YELLOW



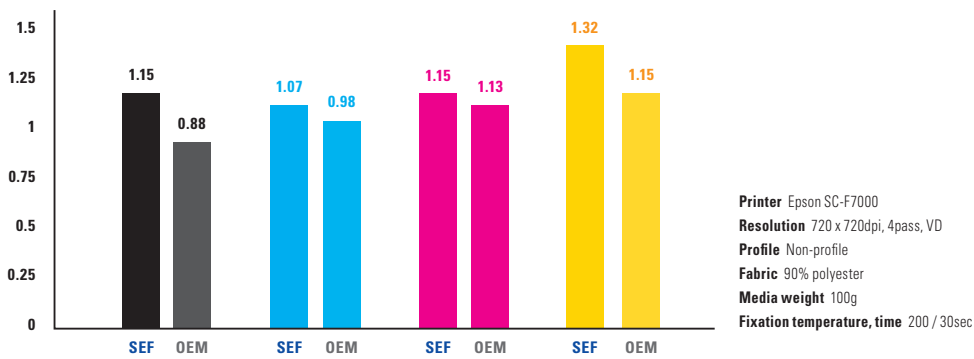


TABLE OF FASTNESS PROPERTIES

Color	Content	Transfer Condition		Light Fastness	Wash Fastness	Alkali Perspiration Fastness	Crock Fastness
		180°C/ 60sec	200°C/ 30sec	ISO 105-B02:1994(160h) Rating 1-7	ISO 105-C06:2010(40°C) Rating 1-5	ISO 105-E04:2013 Rating 1-5	ISO 105-X 12:2001 Rating 1-5
● HD Black		180°C/ 60sec	200°C/ 30sec	5/6	4/5	4/5	4/5
● Cyan		180°C/ 60sec	200°C/ 30sec	4/5	4/5	4/5	4/5
● Magenta		180°C/ 60sec	200°C/ 30sec	6	4/5	4/5	4/5
● Yellow		180°C/ 60sec	200°C/ 30sec	7	4/5	4/5	4/5

BLACK & COLOR OPTICAL DENSITY

The color concentration of SubliNova Sure is high with vivid color and its optical density is much higher than original inks. The higher the figures, the deeper the optical density.



Smart

SubliNova Smart

SubliNova Smart can be used with both direct printing on fabrics and traditional heat transfer process with transfer paper. It has superior printing quality in various printing environments as well as jetting stability in long term printing with various printers on the market.

Primary Features

- Suitable for the plotters equipped with epon DX4, DX5 printhead
- Fast drying time on transfer paper
- Enhanced productivity
- Universal for both direct and transfer printing
- Intense and vibrant colors
- Superior fastness properties
- Environmentally friendly : Free from formaldehyde, VOCs, Alkylphenol and compliance with RoHS

PRINTER COMPATIBILITY

MIMAKI JV4-130/ 160/ 180, JV22, JV33-160A
MIMAKI JV5-160A(CARTRIDGE ONLY)
ROLAND FP740/ FJ740
ROLAND HI-FI JET PRO II 540/ 640/ FJ500/ FJ600
MUTOH VALUEJET 1604/ 1614PRO(AQUA)-AVAILABLE W/O CARD CHIP
MUTOH RJ900/ 900C/ VJ1204/ VJ1304
MUTOH FALCON RJ8000 SERIES/ RJ8100
EPSON STYLUS PRO 4000/ 7000/ 7400/ 7600/ 7800/ 7880/ 9000/
EPSON STYLUS PRO 9400/ 9500/ 9600/ 9800/ 9880
LLB ONLY FOR EPSON STYLUS 4880/ 4800/ 7890

SHELF LIFE

24 MONTHS

PRODUCT OFFERING

PACKING:

440ML CARTRIDGE, 1L PACK, 1L BOTTLE, 20L BOTTLE

COLORS:

BLACK	CYAN	MAGENTA	YELLOW	LIGHT CYAN	LIGHT MAGENTA
ORANGE	RED	BLUE	FLUO YELLOW	FLUO PINK	
PHOTO BLACK	LIGHT BLACK	LIGHT LIGHT BLACK			





TABLE OF FASTNESS PROPERTIES

Color	Transfer Condition		Light Fastness	Wash Fastness	Alkali Perspiration Fastness	Crock Fastness
	180°C/ 60sec	200°C/ 30sec	ISO 105-B02:1994(160h) Rating 1-7	ISO 105-C06:2007(40°C) Rating 1-5	ISO 105-E04:2010 Rating 1-5	ISO 105-X 12:2001 Rating 1-5
● Black	180°C/ 60sec	200°C/ 30sec	5	4/5	4/5	4/5
● Cyan	180°C/ 60sec	200°C/ 30sec	4/5	4/5	4/5	4/5
● Magenta	180°C/ 60sec	200°C/ 30sec	7	4/5	4/5	4/5
● Yellow	180°C/ 60sec	200°C/ 30sec	7	4/5	4/5	4/5

QUICK DRYING

SubliNova Smart ink dries instantly to enable you to fold or handle the transfer sheets without fear of smudging.

SUBLINOVA SMART

60 seconds after printing



OTHER INKS

60 seconds after printing



- Printer : Mimaki JV33
 - Resolution : 540 x 720dpi, Bi, 4Pass
 - Media weight : 100g

Media

Transfer paper

To supply a 'Total Solution' in the sublimation market, InkTec has been manufacturing and supplying the sublimation transfer paper to the world over last ten years. With high quality and a competitive price, InkTec transfer papers have an excellent reputation in the global market.

Primary Features

- Special double coated paper for heat transfer
- Vivid color & Quick drying & Great ink absorption
- Superior image transfer
- Suitable for all types of heat transferred products

PRODUCT OFFERING

TYPE :

STICKY, NON-STICKY

SIZE :

36" 42" 50" 54" 60" 63"

